

Basket Reeder

Pattern excerpt from the Fall 2008 issue

Free Pattern — The Sultans Mini Treasure Basket

By: Mary Elizabeth Skillings

Dimensions: Base 3" diameter x 3" tall

Tested by: Joann Woloszyn

Intermediate Weaving Level

Materials:

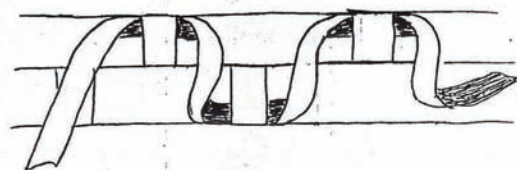
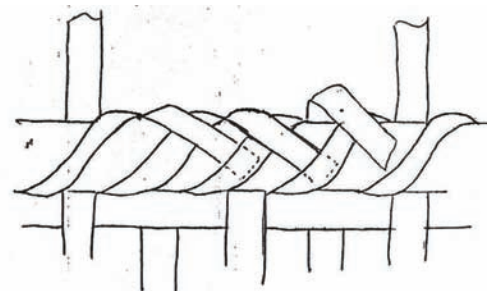
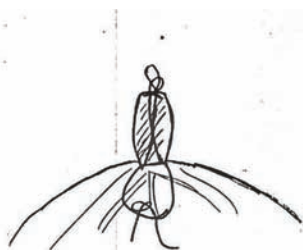
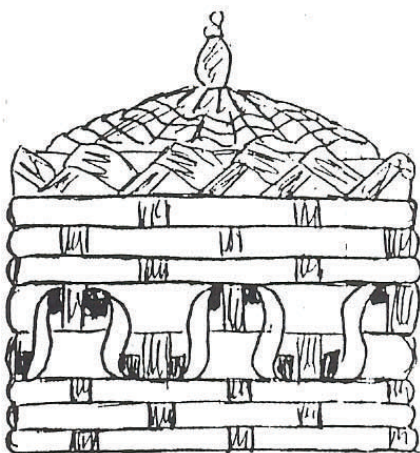
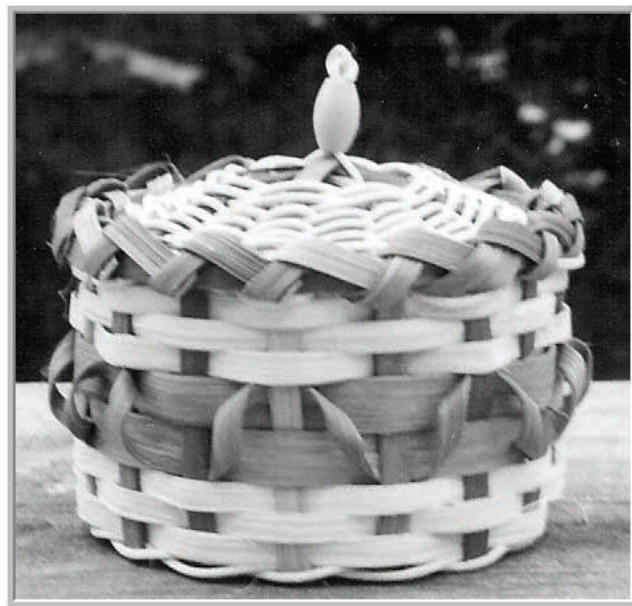
- 1/4" flat dyed variegated or in 4 different colors
- 3/8" flat reed dyed a color or coordinate with the variegated or 1 of the 4 colors
- #2 round reed natural
- 1/4" natural flat for weavers
- 1 wooden bead approx 1/4" x 1/2" oval or 1/2" round

Preparation:

- Cut 8 stakes from variegated 1/4" reed at 16" long OR
Cut 2 stakes at 16" from 4 different colors. Either way you should have 8 dyed stakes at 16".
- Soak stakes & #2 round reed and 1/4" natural stakes to start.
- Mark centers of stakes and 1 1/4" on each side of enter.

Construction:

- Lay the 8 stakes in a spiraled fashion, rough side up & center marks even. The 1 1/2" marks should form a circle about 2 1/2" across.
- Twine with the #2 round reed on the 1 1/4" marks making a circle about 2 1/2" across.
- Twine for 3 rounds or as many as needed for a 4" base diameter. Keep the twining rows close together.
- Upset the stakes, do not crack them.



Basket Reeder

Pattern excerpt from the Fall 2008 issue

- With the 1/4" natural reed, weave three rows of over-under, start-stop weaving keeping the rows packed & the sides of the basket coming straight up.
- Now weave in the same manner with 3/8" dyed reed for 2 rows.
- Now weave 4 rows with the natural 1/4" reed. The last row will be covered by the rim.
- DO NOT CUT ANY OF THE STAKES, instead leave them standing straight up at this time.
- With a piece of 1/4" dyed reed, clip on a rim inside and out leaving the stake ends standing up between them.
- With a long piece of 1/4" dyed reed, single lash the rim on in the usual manner. Keep the stake ends standing up, the lasher pass will actually pass between the stakes. End the lashing on the inside of the basket.
- Now, making sure the stakes are wet & pliable, bend each stake to the right (left for lefties) & tuck the end under the lasher pass. SEE ILLUSTRATION. Trim the end so that it does not extend beyond the lasher. This creates a ric-rak type border on the rim. You may BUMP UP the bottom of the basket if you wish.

Lip:

- Cut 8 pieces of #2 round reed at 7" long.
- Soak till pliable & then insert (hairpin) them, one around every other stake from the outside to the inside of the basket. Make sure the ends are even. They are inserted between the rim and the last row of weaving at the top of the basket.
- With a long piece of #2 round reed, twine around these stakes, keeping the twining close to the rim with each round. Twine for 3 rounds & end the twining.
- Now weave a simple braid by passing a stake to the right over one stake & down towards the bottom of the basket. When the last stake is placed, make sure the braid is neat & snug up next to the twining & then trim the ends off to about 1/2" or so they don't pull out.

Lid:

- Cut 8 stakes from 1/4" dyed reed at 8" and mark centers on right side. Soak these & some #2 round reed.
- Set the stakes in a spiral using 4 of the stakes RIGHT side up center marks even.
- Twine around these stakes in a small circle about 1 1/2" across. Twine for 2 rounds keeping the twining close together. Add the remaining stakes, one between each woven stake. ADD THESE TO THE UNDER SIDE OF THE LID & KEEP THE RIGHT SIDE UP. If you need more space, twine for another row before adding the stakes.
- Continue twining for 5 more rounds or till the lid fits the basket. Turn it upside down to see how it lays on the lip of the basket. Dome it slightly as you twine.
- When the lid is right size, bend the stakes to the under side of the lid & tuck the ends under a few rows of twining.
- Take a piece of #2 round reed long enough to tie easily, about 12". Thread one end through the bead. Tie a knot in the reed & then thread it through the bead again leaving the knot on top of the bead.
- Now insert the ends evenly spaced on the lid between two stakes & tie it securely on the underside of the lid. See illustration.

Curls:

- With a long piece of dyed 1/4" reed apply a row of curls to the body of the basket along the two 3/8" rows.
- Start with the right side of the reed against the basket under a 1/4" stake. Curl the reed as shown in the illustration & insert under the 1/4" stake to the right but on the other 3/8" row. The curls will alternate up & down these two rows.

COPYRIGHT © MARY E. SKILLINGS 1992
Bittersweet Basketry, 251 Main Street, Dansville, NY 14437
(585) 335-6503 • mskillings@stny.rr.com